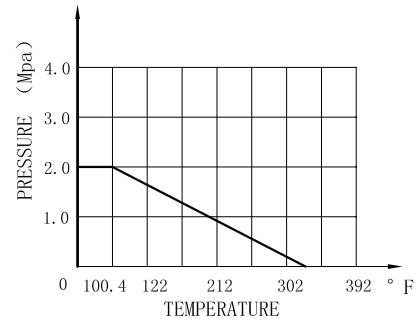
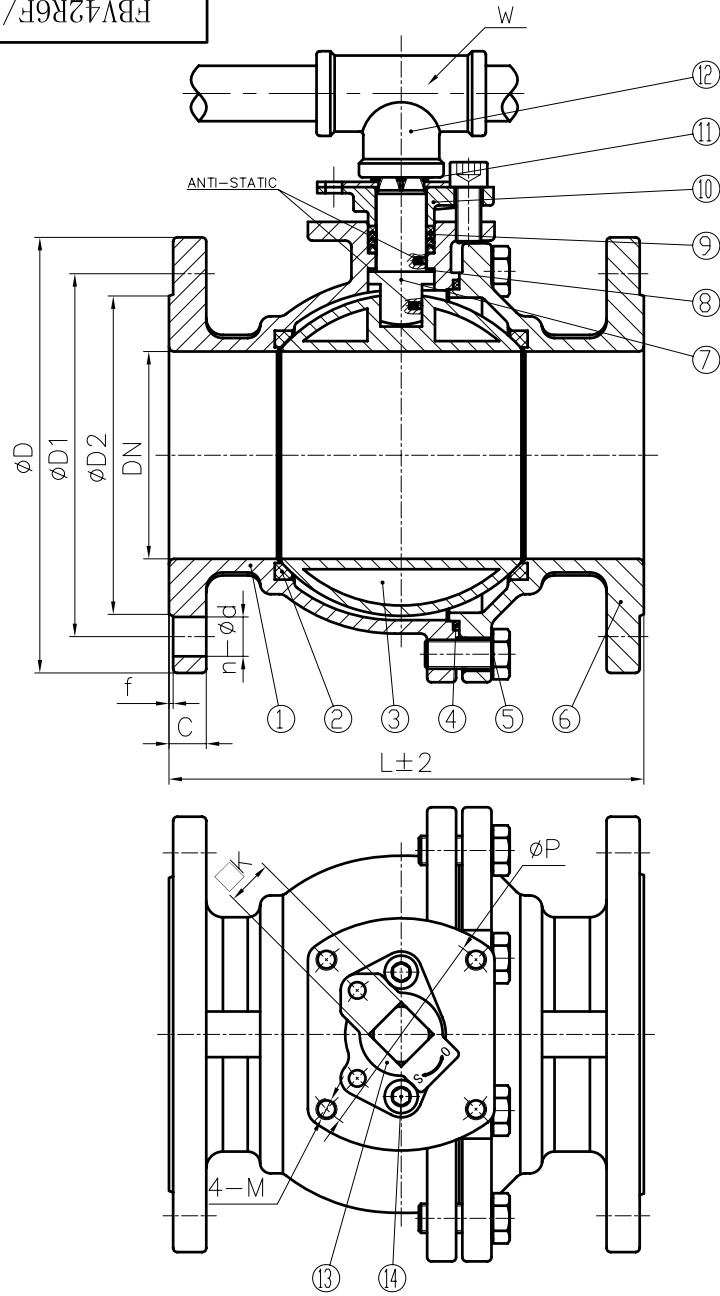


FBV42R6F/150



Nominal pressure		150LB					
Test pressure	Shell test	3.0	MPa	test medium	water	Test temperature	normal temperature
	seal test	2.2			air		
	Gas seal test	0.6					
Applicable medium		water,oil,gas					
Applicable temperature		-20-356°F					

NPS	L	D	D1	D2	C	f	n-ød	W	K	P	M	Weight (lb)
5"	14.016	10.039	8.500	7.311	0.945	0.063	8-ø0.866	21.654	0.827	4.016	MO.394	69.997
6"	15.512	11.024	9.500	8.500	1.024	0.063	8-ø0.866	25.591	0.827	4.921	MO.472	109.129
8"	17.992	13.583	11.752	10.626	1.142	0.063	8-ø0.866	31.496	1.063	4.921	MO.472	176.370

14	HEXAGON HEAD BOLT		2	A193 B8M	
13	STOPPER		1	SS304	
12	HANDLE		1	STAINLESS STEEL	
11	SNAP RING		1	SS304	
10	GLAND		1	A351 CF8	
9	PACKING		-	RPTFE	
8	STEM WASHER		1	RPTFE	
7	STEM		1	A276 316	
6	BONNET		1	A351 CF8M	
5	BOLT		-	A193 B8M	
4	GASKET		1	RPTFE	
3	BALL		1	SS316	
2	SEAT		2	RPTFE	
1	BODY		1	A351 CF8M	
NO.	DESCRIPTION		Q' TY	MATERIAL	

NOTE:
 1.Design and Manufacture for valve according to ANSI B16.34-2009.
 2.Face-to-face dimensions for valve according to ASME B16.10-2009.
 3.End flange dimensions for valve according to ASME B16.5-2009.
 4.Inspection and Test for valve according to API 598-2009.

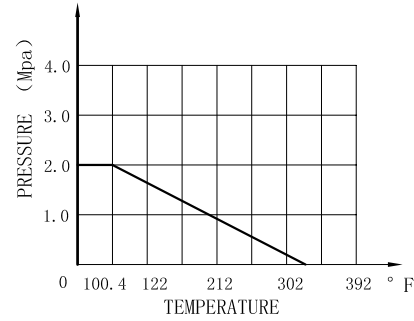
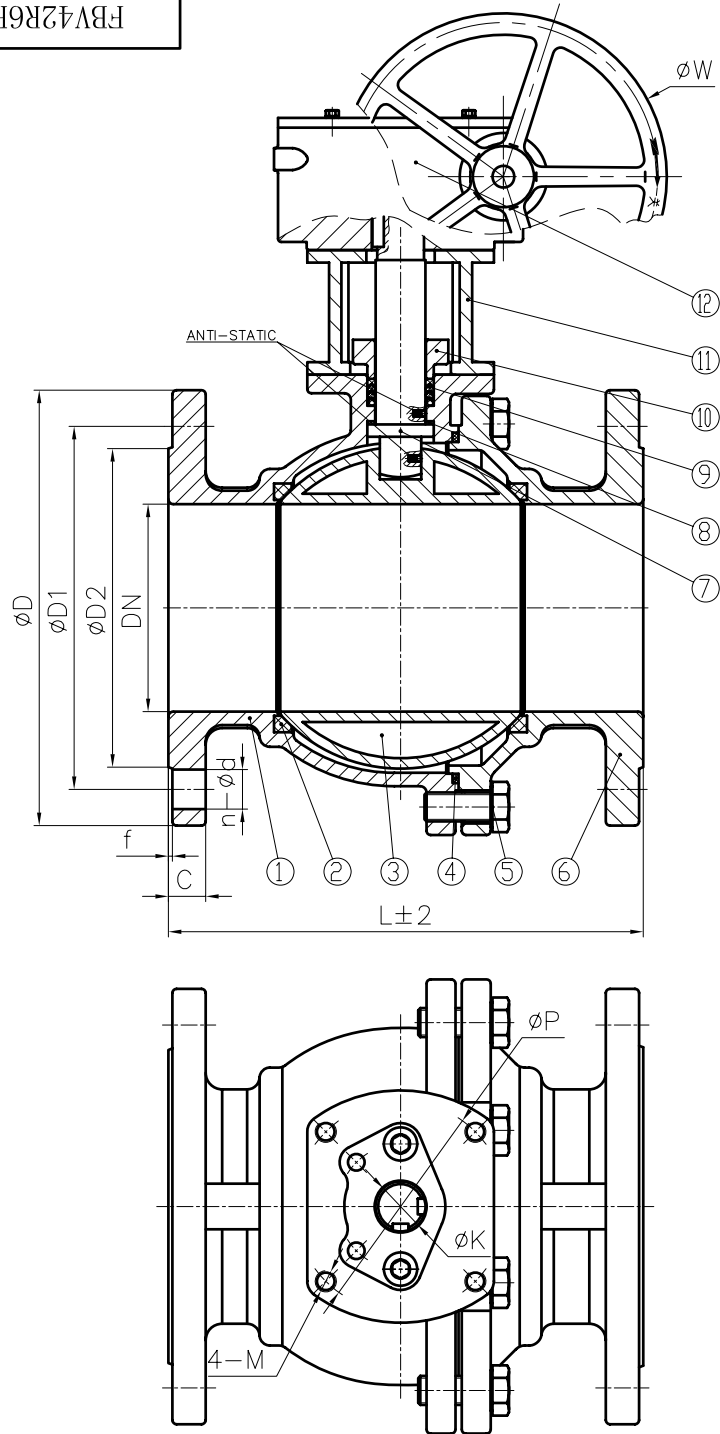


MARK	BEFORE MODIFIED	AFTER MODIFIED	DATE	SCALE			
DRA.		APP.					
CHK.		DATE		WWW.DISCOUNTVALVES.COM			

Flange Ball Valve
 150LB, CF8M, Fire Safe

WWW.DISCOUNTVALVES.COM

FBV42R6F/150



Nominal pressure			150LB				
Test pressure	Shell test	3.0	MPa	test medium	water	Test temperature	normal temperature
	seal test	2.2			air		
	Gas seal test	0.6					
Applicable medium		water,oil,gas					
Applicable temperature		-20~356°F					

NOTE:

- 1.Design and Manufacture for valve according to ANSI B16.34-2009.
- 2.Face-to-face dimensions for valve according to ASME B16.10-2009.
- 3.End flange dimensions for valve according to ASME B16.5-2009.
4. Inspection and Test for valve according to API 598-2009.

NPS	L	D	D1	D2	C	f	n-ød	W	K	P	M	Weight(lb)
10"	20.984	15.945	14.252	12.748	1.220	0.063	12-ø0.984	15.748	1.772	5.512	M0.630	352.740
12	WORM GEAR ACTUATOR						1	/				
11	YOKE						1	A351 CF8				
10	GLAND						1	A351 CF8				
9	PACKING						-	RPTFE				
8	STEM WASHER						1	RPTFE				
7	STEM						1	A276 316				
6	BONNET						1	A351 CF8M				
5	BOLT						-	A193 B8M				
4	GASKET						1	RPTFE				
3	BALL						1	SS316				
2	SEAT						2	RPTFE				
1	BODY						1	A351 CF8M				
NO.	DESCRIPTION						Q' TY	MATERIAL				
							DISCOUNT VALVES					
												Flange Ball Valve 150LB, CF8M, Fire Safe
MARK	BEFORE MODIFIED	AFTER MODIFIED	DATE									
DRA.		APP.										
CHK.		DATE										
WWW.DISCOUNTVALVES.COM												